

# Proyalbi



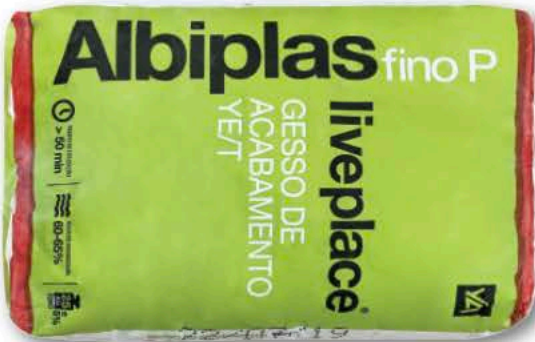
Products  
Data Sheet  
**2021**

Email: [norberto@proyalbi.com.au](mailto:norberto@proyalbi.com.au) | Website: [www.proyalbi.com.au](http://www.proyalbi.com.au)

PO Box 272 Petersham NSW 2049



Proyalbi Fine



Proyalbi Fine White



Proyalbi Plus



Up to 100mm Thick

Proyalbi Plus Smooth Finish can also be applied a thickness of between 1mm to 100mm in a single application.



### Point Float

300 x 160



### Internal Corner Float



### Small Float

355 x 49

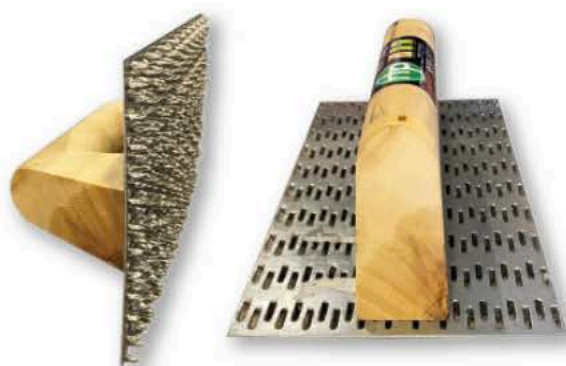


### Small Float

325 x 29



### Exterior Corner Float



### Raspador Float



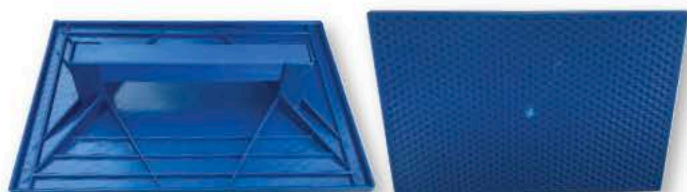
### Float Medium

265 x 150



### Big Float Black

340 x 217



### Big Float Blue

340 x 217



### Big Float Red

340 x 217



### Big Float Green

340 x 217



**Glue Sticks**



**Shaft**

D5 Spindle



**Sponge for Render**

Ref: G1345



**Straight Edge  
English Feather**

Available in: 1M, 1.5M,  
2M & 2.5M



**Proyalbi External Tool**

40 Blades



**Portuguese  
Bell Hammer**



**Big Plastic 50L**



**Tool #0001**



**Tool #0002**



**Tool #0003**



**Tool #0004**



**Tool #0005**



**Tool #0006**



**Tool #0007**



**Tool #0008**

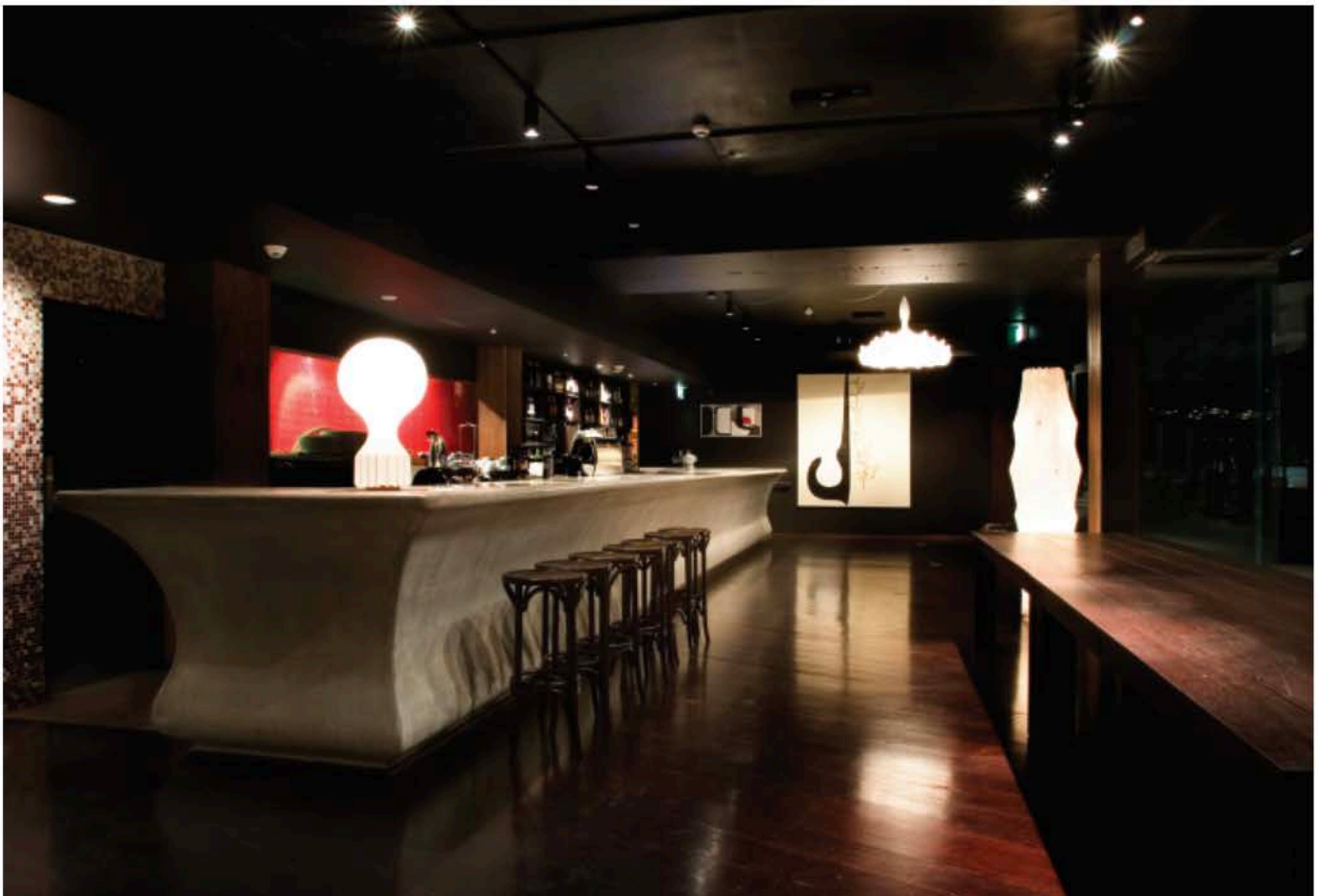


**Tool #0009**





Proyalbi is a pre packed, fine powdered off white render, producing a high quality render finish. Proyalbi products are specially produced by Yesos Albi in Spain and exported globally for a variety of high-end construction projects. Manufactured from the highest quality materials with high quality control it offers the best of naturally occurring plaster. Proyalbi has the unique ability of being able to be applied at various thicknesses from 1 to 100mm in one coating, yet will not display common issues experienced with sand and cement such as cracking and herringboning. Proyalbi products provides its consumers with more durable, everlasting and safe finishes which boasts a fine finish, excellent durability and chemical properties.



## General Application Notes

Proyalbi Plus and Proyalbi Fino is recommended to be applied to a thoroughly dry surface and the render works should be undertaken at the same time if possible, to ensure consistency, avoid formation of spots and to prevent premature degradation.

Ensuring the working area and surfaces are not exposed to elements such as rain will ensure a finer finish, no formation of moisture stains and will not soften the material.

The use of expansion joints, fibre glass mesh and correctly installed plastic profiles is highly recommended. This will prevent any damage by shock and will provide a straight line on corners regardless of the conditions of the surface below. Proyalbi installers will advise the client of the correct locations of this to ensure the best finish and longevity of the product.

The recommended thickness of the Proyalbi Plus layer is 10-15mm with a maximum of 25mm. Thicker layers are not recommended but 2 layers can be applied prior to the first coat setting.

The Proyalbi Albiplas Fino finishing layer is applied prior to the complete setting of the levelling layer with thickness as required. Application of paint to the finished layer should be done in a manner which prevents glazing.

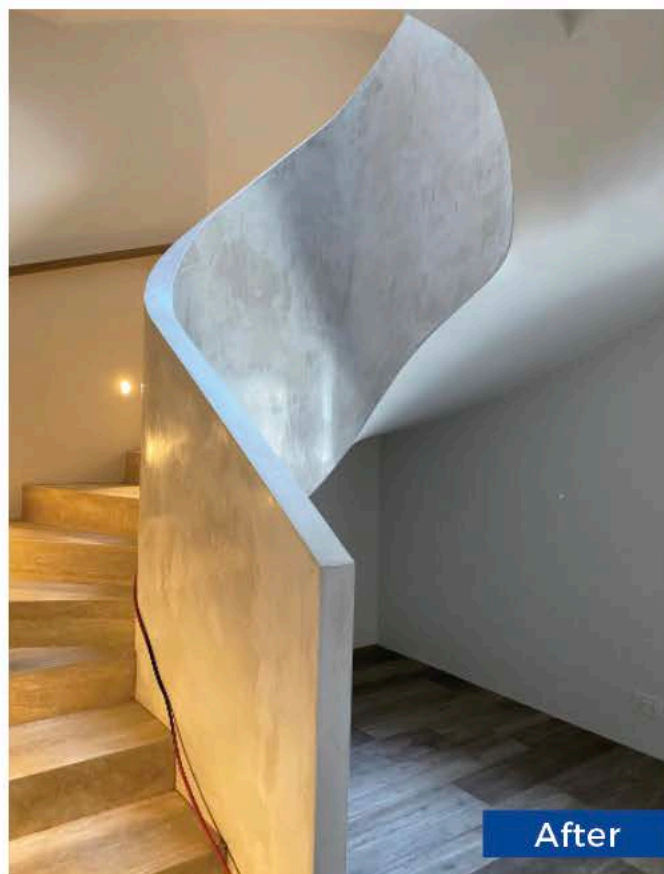
The following recommendation are made regarding the condition of the wall or substrate.

- Over the application of a 2m wide area there should be no deviation greater than 10mm
- Vertical deviation is measured at a height corresponding to the current ceiling height must not exceed 5mm
- The final surface must be even, with no visible cracks, without grooves or recesses with a depth greater than 1mm across the wider area.
- Joints must be straight and the edges straight and free of ruptures and dents

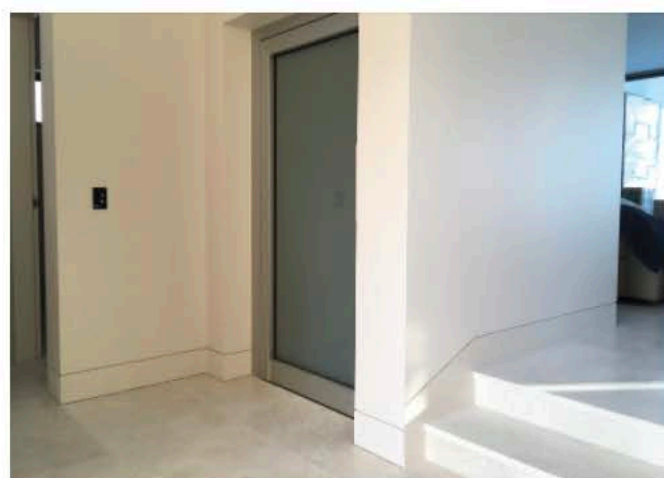
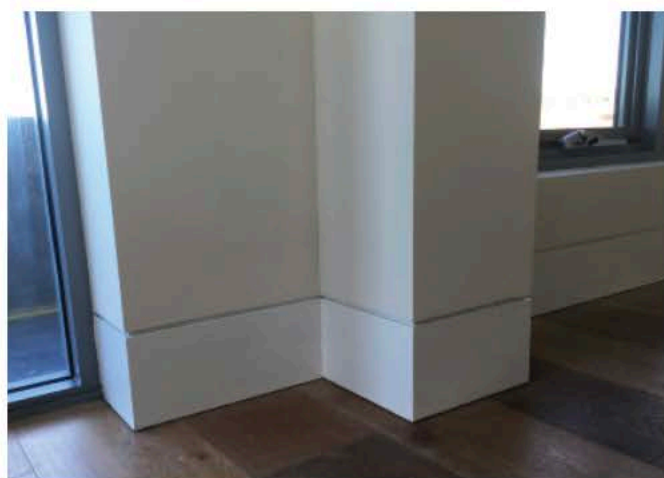
It is recommended that the wall substrate must be completely dry and cured depending on the material and climate. The overall quality and condition of the wall substrate is important to the finish of the product. At the time of application, the must be prepared for good cohesion and stability and be dry and free from products that may impair the adhesion of the coating, such as dust, powders, oils, etc. However, if the support is very absorbent, it is recommended to slightly slight wet or the apply primer to ensure the best finish.

It is important to correctly ensure the correct atmospheric conditions for the application of both Proyalbi Plus and Proyalbi Albiplas Fino. Temperatures should be above 5 degrees C and less than 40 degrees C. Conditions outside these ranges could results in accelerated evaporation of the mixture or mixture being incorrectly kneaded. Areas of application which may be exposed to these conditions should be protected for 48 hours after completion.





**Proyalbi over timber handrail**



**Follow us on**

